



# **BCCI 2026-27 DOMESTIC SEASON SCHEDULE**

# 2026-27 SEASON SCHEDULE – START & END DATE



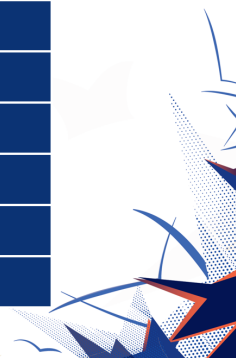
Tournament	Category	League (Start & End Date)		Knockout (Start & End Date)	
DULEEP TROPHY	Mens Seniors	-	-	23-Aug-26	10-Sep-26
IRANI CUP	Mens Seniors	-	-	01-Oct-26	05-Oct-26
RANJI TROPHY ELITE	Mens Seniors	11-Oct-26 to 5-Nov-26 (Phase 1)	17-Jan-27 to 04-Feb-27 (Phase 2)	09-Feb-27	03-Mar-27
RANJI TROPHY PLATE	Mens Seniors	11-Oct-26 to 5-Nov-26 (Phase 1)	17-Jan-27 to 20-Jan-27 (Phase 2)	24-Jan-27	28-Jan-27
SYED MUSHTAQ ALI TROPHY ELITE	Mens Seniors	14-Nov-26	26-Nov-26	30-Nov-26	6-Dec-26
SYED MUSHTAQ ALI TROPHY PLATE	Mens Seniors	14-Nov-26	22-Nov-26	24-Nov-26	24-Nov-26
VIJAY HAZARE TROPHY ELITE	Mens Seniors	14-Dec-26	29-Dec-26	2-Jan-27	8-Jan-27
VIJAY HAZARE TROPHY PLATE	Mens Seniors	14-Dec-26	24-Dec-26	27-Dec-26	27-Dec-26
COL. CKN WINNERS Vs ROI (U23)	Mens U-23	-	-	01-Oct-26	04-Oct-26
COL. C K NAYUDU TROPHY ELITE	Mens U-23	12-Oct-26 to 6-Nov-26 (Phase 1)	18-Jan-27 to 05-Feb-27 (Phase 2)	10-Feb-27	01-Mar-27
COL. C K NAYUDU TROPHY PLATE	Mens U-23	12-Oct-26 to 6-Nov-26 (Phase 1)	18-Jan-27 to 21-Jan-27 (Phase 2)	25-Jan-27	28-Jan-27
MENS U23 STATE A TROPHY ELITE (T20)	Mens U-23	1-Dec-26	13-Dec-26	17-Dec-26	23-Dec-26
MENS U23 STATE A TROPHY PLATE (T20)	Mens U-23	1-Dec-26	9-Dec-26	11-Dec-26	11-Dec-26
VINOO MANKAD TROPHY ELITE	Mens U-19	08-Oct-26	16-Oct-26	20-Oct-26	27-Oct-26
VINOO MANKAD TROPHY PLATE	Mens U-19	08-Oct-26	16-Oct-26	18-Oct-26	18-Oct-26
COOCH BEHAR TROPHY ELITE	Mens U-19	26-Nov-26	29-Dec-26	03-Jan-27	30-Jan-27
COOCH BEHAR TROPHY PLATE	Mens U-19	26-Nov-26	29-Dec-26	03-Jan-27	06-Jan-27
VIJAY MERCHANT TROPHY ELITE	Mens U-16	14-Nov-26	8-Dec-26	12-Dec-26	5-Jan-27
VIJAY MERCHANT TROPHY PLATE	Mens U-16	14-Nov-26	8-Dec-26	12-Dec-26	15-Dec-26



# 2026-27 SEASON SCHEDULE – START & END DATE



Tournament	Category	League (Start & End Date)		Knockout (Start & End Date)	
SENIOR WOMENS T20 TROPHY ELITE	Senior Womens	26-Oct-26	6-Nov-26	14-Nov-26	20-Nov-26
SENIOR WOMENS T20 TROPHY PLATE	Senior Womens	26-Oct-26	2-Nov-26	4-Nov-26	4-Nov-26
SENIOR WOMENS INTERZONAL T20 TROPHY	Senior Womens	24-Nov-26	2-Dec-26	4-Dec-26	4-Dec-26
SENIOR WOMENS ONE DAY TROPHY ELITE	Senior Womens	19-Dec-26	31-Dec-26	4-Jan-27	10-Jan-27
SENIOR WOMENS ONE DAY TROPHY PLATE	Senior Womens	19-Dec-26	27-Dec-26	29 Dec-26	29 Dec-26
SENIOR WOMENS INTERZONAL ONE DAY TROPHY	Senior Womens	17-Feb-27	25-Feb-27	27-Feb-27	27-Feb-27
SENIOR WOMENS INTERZONAL MULTI DAY TROPHY	Senior Womens	-	-	13-Mar-27	28-Mar-27
WOMENS U23 T20 TROPHY ELITE	Womens U-23	14-Nov-26	21-Nov-26	25-Nov-26	1-Dec-26
WOMENS U23 T20 TROPHY PLATE	Womens U-23	14-Nov-26	21-Nov-26	23-Nov-26	23-Nov-26
WOMENS U23 ONE DAY TROPHY ELITE	Womens U-23	19-Feb-27	27-Feb-27	3-Mar-27	10-Mar-27
WOMENS U23 ONE DAY TROPHY PLATE	Womens U-23	19-Feb-27	27-Feb-27	1-Mar-27	1-Mar-27
WOMENS U19 T20 TROPHY ELITE	Womens U-19	9-Oct-26	16-Oct-26	20-Oct-26	26-Oct-26
WOMENS U19 T20 TROPHY PLATE	Womens U-19	9-Oct-26	16-Oct-26	18-Oct-26	18-Oct-26
WOMENS U19 T20 CHALLENGER TROPHY	Womens U-19	30-Oct-26	3-Nov-26	5-Nov-26	5-Nov-26
WOMENS U19 ONE DAY TROPHY ELITE	Womens U-19	4-Jan-27	12-Jan-27	16-Jan-27	23-Jan-27
WOMENS U19 ONE DAY TROPHY PLATE	Womens U-19	4-Jan-27	12-Jan-27	14-Jan-27	14-Jan-27
WOMENS U15 ONE DAY TROPHY ELITE	Womens U-15	5-Jan-27	13-Jan-27	17-Jan-27	24-Jan-27
WOMENS U15 ONE DAY TROPHY PLATE	Womens U-15	5-Jan-27	13-Jan-27	15-Jan-27	15-Jan-27
VIZZY TROPHY (T20)	Inter University	22-Feb-27	26-Feb-27	28-Feb-27	28-Feb-27



# 2026-27 SEASON SCHEDULE – GROUPING FORMAT



Tournament	Grouping Format	# Matches per team
RANJI TROPHY ELITE	4 X 8 teams per group	8 team groups – 7 matches per team in the league Knockouts - 4 QFs, 2 SFs, 1 Final
RANJI TROPHY PLATE	1 X 6 teams per group	Plate team group – 5 matches per team in the league, 1 Final
SYED MUSHTAQ ALI TROPHY ELITE	4 x 8 teams per group	8 team groups – 7 matches per team in the league Knockouts – Top 2 teams from each group qualify for the Super League. 3 Super league matches per team. Group Topper from A & B group will play in the final
SYED MUSHTAQ ALI TROPHY PLATE	1 x 6 teams per group	Plate team group – 5 matches per team in the league, 1 Final
VIJAY HAZARE TROPHY ELITE	4 X 8 teams per group	8 team groups – 7 matches per team in the league Knockouts - 4 QFs, 2 SFs, 1 Final
VIJAY HAZARE TROPHY PLATE	1 X 6 teams per group	Plate team group – 5 matches per team in the league, 1 Final
COL. C K NAYUDU TROPHY ELITE	3 X 8 teams per group & 1 X 7 teams per group	8 team groups – 7 matches per team in the league 7 team groups – 6 matches per team in the league Knockouts - 4 QFs, 2 SFs, 1 Final
COL. C K NAYUDU TROPHY PLATE	1 X 6 teams per group	Plate team group – 5 matches per team in the league, 1 Final
MENS U23 STATE A TROPHY ELITE (T20)	3 X 8 teams per group & 1 X 7 teams per group	8 team groups – 7 matches per team in the league 7 team groups – 6 matches per team in the league Knockouts - 4 QFs, 2 SFs, 1 Final
MENS U23 STATE A TROPHY PLATE (T20)	1 x 6 teams per group	Plate team group – 5 matches per team in the league, 1 Final
VINOO MANKAD TROPHY ELITE	5 Groups - 6 teams per group	Elite team groups - 5 matches per team across all groups Knockouts - 2 PQFs, 4 QFs, 2 SFs, 1 Final
VINOO MANKAD TROPHY PLATE	1 x 6 teams per group	Plate team group – 5 matches per team in the league, 1 Final
COOCH BEHAR TROPHY ELITE	5 Groups - 6 teams per group	Elite team groups - 5 matches per team across all groups Knockouts - 2 PQFs, 4 QFs, 2 SFs, 1 Final
COOCH BEHAR TROPHY PLATE	1 x 6 teams per group	Plate team group – 5 matches per team in the league, 1 Final



# SEASON SCHEDULE – GROUPING FORMAT



Tournament	Grouping Format	# Matches per team
VIJAY MERCHANT TROPHY ELITE	5 Groups - 6 teams per group	Elite team groups - 5 matches per team across all groups Knockouts - 2 PQFs, 4 QFs, 2 SFs, 1 Final
VIJAY MERCHANT TROPHY PLATE	1 x 6 Plate teams per group	Plate team group – 5 matches per team in the league, 1 Final
SENIOR WOMENS T20 TROPHY ELITE	3 X 8 teams per group & 1 X 7 teams per group	8 team groups – 7 matches per team in the league 7 team groups – 6 matches per team in the league Knockouts – Top 2 teams from each group qualify for the Super League. 3 Super league matches per team. Group Topper from A & B group will play in the final
SENIOR WOMENS T20 PLATE	1 X 6 teams per group	Plate team group – 5 matches per team in the league, 1 Final
SENIOR WOMENS INTERZONAL T20 TROPHY	6 Zonal Teams	5 matches per team in the league, 1 final
SENIOR WOMENS ONE DAY TROPHY ELITE	3 X 8 teams per group & 1 X 7 teams per group	8 team groups – 7 matches per team in the league 7 team groups – 6 matches per team in the league Knockouts - 4 QFs, 2 SFs, 1 Final
SENIOR WOMENS ONE DAY TROPHY PLATE	1 X 6 teams per group	Plate team group – 5 matches per team in league, 1 Final
SENIOR WOMENS INTERZONAL ONE DAY TROPHY	6 Zonal Teams	5 matches per team in the league, 1 final
SENIOR WOMENS INTERZONAL MULTI DAY TROPHY	6 Zonal Teams	Knockout matches
WOMENS U23 T20 TROPHY ELITE	5 x 6 Elite teams per group	Elite team groups - 5 matches per team across all groups Knockouts - 2 PQFs, 4 QFs, 2 SFs, 1 Final
WOMENS U23 T20 TROPHY PLATE	1 x 6 Plate teams per group	Plate team group – 5 matches per team in league, 1 Final
WOMENS U23 ONE DAY TROPHY ELITE	5 x 6 Elite teams per group	Elite team groups - 5 matches per team across all groups Knockouts - 2 PQFs, 4 QFs, 2 SFs, 1 Final
WOMENS U23 ONE DAY TROPHY PLATE	1 x 6 Plate teams per group	Plate team group – 5 matches per team in league, 1 Final
WOMENS U15 ONE DAY TROPHY ELITE	5 x 6 Elite teams per group	Elite team groups - 5 matches per team across all groups Knockouts - 2 PQFs, 4 QFs, 2 SFs, 1 Final
WOMENS U15 ONE DAY TROPHY PLATE	1 x 6 Plate teams per group	Plate team group – 5 matches per team in the league, 1 Final
VIZZY TROPHY (T20)	4 Zonal Teams	3 matches per team in the league, 1 final



# SEASON SCHEDULE – KNOCKOUT QUALIFICATIONS



Tournament	Knockout Qualifications
SYED MUSHTAQ ALI TROPHY ELITE	Top 2 teams from all 4 groups will directly qualify for the Super League. Group A & B will have 4 teams each. Each team will play 3 matches in the Super league. Group toppers from A & B group will play in the final.
SYED MUSHTAQ ALI TROPHY PLATE	Plate Group – Top 2 teams will play in the Final.
VIJAY HAZARE TROPHY ELITE	Top 2 teams from all 4 groups will directly qualify for the Quarter Finals. A1 Vs C2, B1 Vs D2, C1 Vs A2, D1 Vs B2 will play QFs. QF 1 Winner will play QF 4 Winner & QF 2 Winner Vs QF 3 Winner will play in the Semi Finals. Winner of Semi Finals will play in the final.
VIJAY HAZARE TROPHY PLATE	Plate Group – Top 2 teams will play in the Final.
RANJI TROPHY ELITE	Elite Groups – Top 2 teams from all 4 groups will directly qualify for the Quarter Finals. A1 Vs C2, B1 Vs D2, C1 Vs A2, D1 Vs B2 will play QFs. QF 1 Winner will play QF 4 Winner & QF 2 Winner Vs QF 3 Winner will play in the Semi Finals. Winner of Semi Finals will play in the final.
RANJI TROPHY PLATE	Plate Group – Top 2 teams will play in the Final.
MENS U23 STATE A TROPHY ELITE (T20)	Top 2 teams from all 4 groups will directly qualify for the Quarter Finals. A1 Vs C2, B1 Vs D2, C1 Vs A2, D1 Vs B2 will play QFs. QF 1 Winner will play QF 4 Winner & QF 2 Winner Vs QF 3 Winner will play in the Semi Finals. Winner of Semi Finals will play in the final.
MENS U23 STATE A TROPHY PLATE (T20)	Plate Group – Top 2 teams will play in the Final.
COL. C K NAYUDU TROPHY ELITE	Elite Groups – Top 2 teams from all 4 groups will directly qualify for the Quarter Finals. A1 Vs C2, B1 Vs D2, C1 Vs A2, D1 Vs B2 will play QFs. QF 1 Winner will play QF 4 Winner & QF 2 Winner Vs QF 3 Winner will play in the Semi Finals. Winner of Semi Finals will play in the final.
COL. C K NAYUDU TROPHY PLATE	Plate Group – Top 2 teams will play in the Final.
VINOO MANKAD TROPHY ELITE	Top 2 teams from all 5 groups will qualify for the knockouts. Group Toppers from all 5 groups will directly qualify for the Quarter Finals & will be ranked from 1-5. 2nd placed teams will be ranked from 6-10. 6th ranked team will directly qualify for the Quarter Final along with group toppers. Team ranked 7-10 will play PQFs.
VINOO MANKAD TROPHY PLATE	Plate Group – Top 2 teams will play in the Final.
COOCH BEHAR TROPHY ELITE	Top 2 teams from all 5 elite groups will qualify for the knockouts. Group Toppers from all 5 groups will directly qualify for the Quarter Finals & will be ranked from 1-5. 2nd placed teams will be ranked from 6-10. 6th ranked team will directly qualify for the Quarter Final along with group toppers. Team ranked 7-10 will play PQFs.
COOCH BEHAR TROPHY PLATE	Plate Group – Top 2 teams will play in the Final.



# SEASON SCHEDULE – KNOCKOUT QUALIFICATIONS



Tournament	Knockout Qualifications
VIJAY MERCHANT TROPHY ELITE	Top 2 teams from all 5 elite groups will qualify for the knockouts. Group Toppers from all 5 groups will directly qualify for the Quarter Finals & will be ranked from 1-5. 2nd placed teams will be ranked from 6-10. 6th ranked team will directly qualify for the Quarter Final along with group toppers. Team ranked 7-10 will play PQFs.
VIJAY MERCHANT TROPHY PLATE	Plate Group – Top 2 teams will play in the Final.
SENIOR WOMENS T20 TROPHY ELITE	Top 2 teams from all 4 groups will directly qualify for the Super League. Group A & B will have 4 teams each. Each team will play 3 matches in the Super league. Group toppers from A & B group will play in the final.
SENIOR WOMENS T20 TROPHY PLATE	Plate Group – Top 2 teams will play in the Final.
SENIOR WOMENS INTER ZONAL T20 TROPHY	Top 2 Teams in the league phase will play in the Final
SENIOR WOMENS ONE DAY TROPHY ELITE	Top 2 teams from all 4 groups will directly qualify for the Quarter Finals. A1 Vs C2, B1 Vs D2, C1 Vs A2, D1 Vs B2 will play QFs. QF 1 Winner will play QF 4 Winner & QF 2 Winner Vs QF 3 Winner will play in the Semi Finals. Winner of Semi Finals will play in the final.
SENIOR WOMENS ONE DAY TROPHY PLATE	Plate Group – Top 2 teams will play in the Final.
SENIOR WOMENS INTER ZONAL ONE DAY TROPHY	Top 2 Teams in the league phase will play in the Final
WOMENS U23 ONE DAY TROPHY ELITE	Top 2 teams from all 5 groups will qualify for the knockouts. Group Toppers from all 5 groups will directly qualify for the Quarter Finals & will be ranked from 1-5. 2nd placed teams will be ranked from 6-10. 6th ranked team will directly qualify for the Quarter Final along with group toppers. Team ranked 7-10 will play PQFs.
WOMENS U23 ONE DAY TROPHY PLATE	Plate Group – Top 2 teams will play in the Final.
WOMENS U23 T20 TROPHY ELITE	Top 2 teams from all 5 groups will qualify for the knockouts. Group Toppers from all 5 groups will directly qualify for the Quarter Finals & will be ranked from 1-5. 2nd placed teams will be ranked from 6-10. 6th ranked team will directly qualify for the Quarter Final along with group toppers. Team ranked 7-10 will play PQFs.
WOMENS U23 T20 TROPHY PLATE	Plate Group – Top 2 teams will play in the Final.



# SEASON SCHEDULE – KNOCKOUT QUALIFICATIONS



Tournament	Knockout Qualifications
WOMENS U19 ONE DAY TROPHY ELITE	<p>Top 2 teams from all 5 groups will qualify for the knockouts.                      Group Toppers from all 5 groups will directly qualify for the Quarter Finals &amp; will be ranked from 1-5.                      2nd placed teams will be ranked from 6-10.                      6th ranked team will directly qualify for the Quarter Final along with group toppers.                      Team ranked 7-10 will play PQFs.</p>
WOMENS U19 ONE DAY TROPHY PLATE	<p>Plate Group – Top 2 teams will play in the Final.</p>
WOMENS U19 T20 TROPHY ELITE	<p>Top 2 teams from all 5 groups will qualify for the knockouts.                      Group Toppers from all 5 groups will directly qualify for the Quarter Finals &amp; will be ranked from 1-5.                      2nd placed teams will be ranked from 6-10.                      6th ranked team will directly qualify for the Quarter Final along with group toppers.                      Team ranked 7-10 will play PQFs.</p>
WOMENS U19 T20 TROPHY PLATE	<p>Plate Group – Top 2 teams will play in the Final.</p>
WOMENS U19 T20 CHALLENGER TROPHY	<p>Top 2 Teams in the league phase will play in the Final</p>
WOMENS U15 ONE DAY TROPHY ELITE	<p>Top 2 teams from all 5 groups will qualify for the knockouts.                      Group Toppers from all 5 groups will directly qualify for the Quarter Finals &amp; will be ranked from 1-5.                      2nd placed teams will be ranked from 6-10.                      6th ranked team will directly qualify for the Quarter Final along with group toppers.                      Team ranked 7-10 will play PQFs.</p>
WOMENS U15 ONE DAY TROPHY PLATE	<p>Plate Group – Top 2 teams will play in the Final.</p>
VIZZY TROPHY (T20)	<p>Top 2 Teams in the league phase will play in the Final</p>



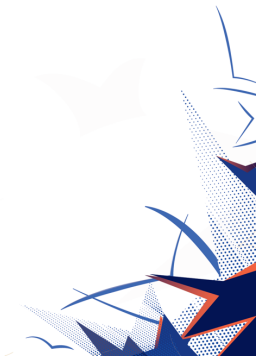
# ZONAL TEAMS PARTICIPATION



## 6 Zonal teams

(Central Zone/South Zone/North Zone/East Zone/West Zone/North-East Zone)  
will be participating in the below listed tournaments:

---

- Duleep Trophy
  - Senior Women's T20 Inter Zonal Trophy
  - Senior Women's One Day Inter Zonal Trophy
  - Senior Women's Multi Day Inter Zonal Trophy
- 
- 

# ZONAL TEAMS PARTICIPATION



## 4 Zonal teams

(South Zone/North Zone/East Zone/West Zone)

will be participating in the below listed tournament:

---

- Vizzy Trophy
- 
- 

# WOMEN'S U19 T20 CHALLENGER TROPHY



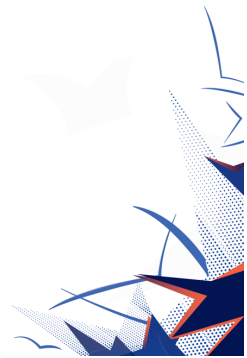
Women's U19 T20 Challenger Trophy – 4 Teams

**Team A**

**Team B**

**Team C**

**Team D**



## MULTI DAY & LIMITED OVERS TOURNAMENTS – PROMOTION & RELEGATION OF TEAMS



### ELITE & PLATE GROUPS:

Plate Group winner of 2026-27 Season will be promoted to Elite Group in 2027-28 season.

For teams participating in the Elite Group, a combined list shall be prepared for the purpose of promotion, relegation and segregation of teams into groups for the next Season. The team that finishes at the bottom in this list in 2026-27 Season shall be relegated to Plate Group in 2027-28 season.

The ranking of the teams for multiday tournaments will be based on Points, then Bonus Points, then Wins, Head2Head (If applicable) and Quotient.

The ranking of the teams for One Day & T20 tournaments will be based on Points, then Wins and then NRR.

For example, after the completion of the SMAT tournament, a list is prepared of all elite teams based on Points, then Wins and then NRR. In this list, Team A finishes 32<sup>nd</sup>. In this case, Team A shall be relegated to the Plate Group. Teams finishing 1<sup>st</sup> to 31<sup>st</sup> in the list, along with the promoted team from Plate Group, shall be divided into Elite Groups for the 2027-28 Season.



# KNOCKOUT QUALIFICATIONS – RANJI TROPHY – ELITE GROUPS



## ELITE GROUPS – 32 TEAMS:

- Top 2 teams from all 4 Elite groups will directly qualify for the Quarter Finals.
- A1 Vs C2, B1 Vs D2, C1 Vs A2, D1 Vs B2 will play QFs.

## ELITE GROUP - QUARTER FINALS:

- QF 1 - Elite Group A1 Vs Elite Group C2
- QF 2 - Elite Group B1 Vs Elite Group D2
- QF 3 - Elite Group C1 Vs Elite Group A2
- QF 4 - Elite Group D1 Vs Elite Group B2

## ELITE GROUP SEMI-FINALS:

- SF 1 - WINNER OF QF 1 VS WINNER OF QF 4
- SF 2 - WINNER OF QF 2 VS WINNER OF QF 3

## ELITE GROUP FINAL:

- F - Winner of Semi Final 1 Vs Winner of Semi Final 2

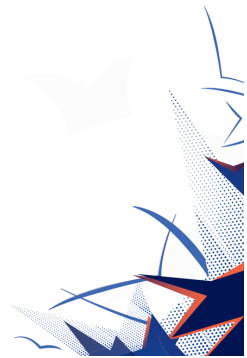
**KNOCKOUT QUALIFICATIONS – ALL PLATE GROUPS  
(MULTI DAY & LIMITED OVERS TOURNAMENTS)**



**Plate Group - 6 teams:**

Top 2 teams in the plate group league will play in the Plate Final

---



# **KNOCKOUT QUALIFICATIONS – COL. C K NAYUDU TROPHY (MULTI DAY) / MENS U23 STATE A TROPHY (T20 FORMAT) – ELITE GROUPS**



## **ELITE GROUPS – 31 TEAMS:**

- Top 2 teams from all 4 Elite groups will directly qualify for the Quarter Finals.
- A1 Vs C2, B1 Vs D2, C1 Vs A2, D1 Vs B2 will play QFs.

## **ELITE GROUP - QUARTER FINALS:**

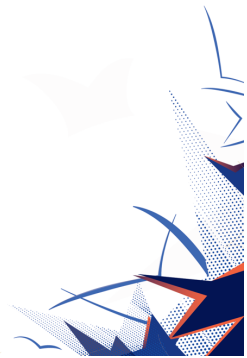
- QF 1 - Elite Group A1 Vs Elite Group C2
- QF 2 - Elite Group B1 Vs Elite Group D2
- QF 3 - Elite Group C1 Vs Elite Group A2
- QF 4 - Elite Group D1 Vs Elite Group B2

## **ELITE GROUP SEMI-FINALS:**

- SF 1 - Winner of QF 1 Vs Winner of QF 4
- SF 2 - Winner of QF 2 Vs Winner of QF 3

## **ELITE GROUP FINAL:**

- F - Winner of Semi Final 1 Vs Winner of Semi Final 2



## KNOCKOUT QUALIFICATIONS – SYED MUSHTAQ ALI TROPHY ELITE & SENIOR WOMENS T20 TROPHY ELITE



### Elite Groups – (Group A-D):

Top 2 teams from all 4 groups will directly qualify for the Super League.

Group A & B will have 4 teams each.

Each team will play 3 matches in the Super league.

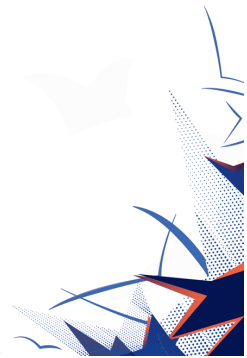
### Super League:

GROUP A	GROUP B
A1	A2
B1	B2
C2	C1
D2	D1

### Final:

Final - Group toppers from A & B group will play in the final.

---



# KNOCKOUT QUALIFICATIONS – LIMITED OVERS TOURNAMENT



## 4 GROUP TEAMS: (VIJAY HAZARE TROPHY & ALL ONE DAY TOURNAMENTS WITH 4 GROUP TEAMS)

### ELITE GROUPS – (GROUP A-D):

- Top 2 teams from all 4 Elite groups will directly qualify for the Quarter Finals.
- A1 Vs C2, B1 Vs D2, C1 Vs A2, D1 Vs B2 will play QFs.

### ELITE GROUP - QUARTER FINALS:

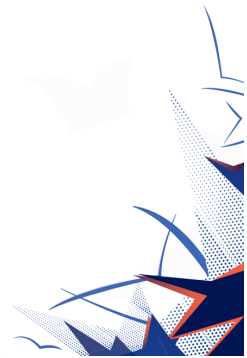
- QF 1 - Elite Group A1 Vs Elite Group C2
- QF 2 - Elite Group B1 Vs Elite Group D2
- QF 3 - Elite Group C1 Vs Elite Group A2
- QF 4 - Elite Group D1 Vs Elite Group B2

### ELITE GROUP SEMI-FINALS:

- SF 1 - Winner of QF 1 Vs Winner of QF 4
- SF 2 - Winner of QF 2 Vs Winner of QF 3

### ELITE GROUP FINAL:

- F - Winner of Semi Final 1 Vs Winner of Semi Final 2



# KNOCKOUT QUALIFICATIONS – COOCH BEHAR TROPHY & VIJAY MERCHANT TROPHY – MULTI DAY ELITE GROUPS



## Elite Groups – (Group A-E):

Top 2 teams from all 5 Elite groups will qualify for the knockouts.

Group Toppers from all 5 groups will directly qualify for the Quarter Finals & will be ranked from 1-5.

2nd placed teams will be ranked from 6-10.

6th ranked team will directly qualify for the Quarter Final along with group toppers.

Team ranked 7-10 will play PQFs.

## Elite Group – Pre-Quarter Finals:

PQF 1 – Team Rank 7 Vs Team Rank 10

PQF 2 – Team Rank 8 Vs Team Rank 9

## Elite Group - Quarter Finals:

QF 1 – Team Rank 1 Vs Winner of PQF 1

QF 2 – Team Rank 2 Vs Winner of PQF 2

QF 3 – Team Rank 3 Vs Team Rank 6

QF 4 – Team Rank 4 Vs Team Rank 5

## Elite Group Semi-Finals:

SF 1 - Winner of QF 1 Vs Winner of QF 4

SF 2 - Winner of QF 2 Vs Winner of QF 3

## Elite Group Final:

- F - Winner of Semi Final 1  
Vs  
Winner of Semi Final 2

# KNOCKOUT QUALIFICATIONS – LIMITED OVERS ELITE GROUPS



## 5 GROUP TEAMS: (VINO O MANKAD TROPHY, WOMEN U-23, WOMEN U19, WOMEN U15)

### Elite Groups – (Group A-E):

Top 2 teams from all 5 Elite groups will qualify for the knockouts.

Group Toppers from all 5 groups will directly qualify for the Quarter Finals & will be ranked from 1-5.

2nd placed teams will be ranked from 6-10.

6th ranked team will directly qualify for the Quarter Final along with group toppers.

Team ranked 7-10 will play PQFs.

### Elite Group – Pre-Quarter Finals:

PQF 1 – Team Rank 7 Vs Team Rank 10

PQF 2 – Team Rank 8 Vs Team Rank 9

### Elite Group - Quarter Finals:

QF 1 – Team Rank 1 Vs Winner of PQF 1

QF 2 – Team Rank 2 Vs Winner of PQF 2

QF 3 – Team Rank 3 Vs Team Rank 6

QF 4 – Team Rank 4 Vs Team Rank 5

### Elite Group Semi-Finals:

SF 1 - Winner of QF 1 Vs Winner of QF 4

SF 2 - Winner of QF 2 Vs Winner of QF 3

### Elite Group Final:

• F - Winner of Semi Final 1

Vs

Winner of Semi Final 2

# ► Ranji Trophy – Grouping Logic



Points Table from 2025-26 season are considered.

All Elite teams are ranked based on Winner, Runner, SF loser Rank 1 & 2, QF Loser Rank 1, 2, 3, 4 based on Points, Bonus Points, Number of Wins, H2H (If applicable) & Quotient.

Remaining teams are grouped and ranked based on Points, Bonus Points, Wins, H2H (If applicable) & Quotient.

Bottom team from all Elite Groups (A/B/C/D) combined based on Points/Bonus Points/Wins/H2H/Quotient relegated to Plate Group

Winner from Plate Group promoted to Elite Group A.

Teams are grouped based on the below logic.

Elite Group A	Elite Group B	Elite Group C	Elite Group D	Plate Group
ELITE WINNER	ELITE RUNNER	SF LOSER RANK 1	SF LOSER RANK 2	ELITE RANK 32
QF LOSER RANK 4	QF LOSER RANK 3	QF LOSER RANK 2	QF LOSER RANK 1	PLATE RUNNER
ELITE RANK 9	ELITE RANK 10	ELITE RANK 11	ELITE RANK 12	PLATE RANK 3
ELITE RANK 16	ELITE RANK 15	ELITE RANK 14	ELITE RANK 13	PLATE RANK 4
ELITE RANK 17	ELITE RANK 18	ELITE RANK 19	ELITE RANK 20	PLATE RANK 5
ELITE RANK 24	ELITE RANK 23	ELITE RANK 22	ELITE RANK 21	PLATE RANK 6
ELITE RANK 25	ELITE RANK 26	ELITE RANK 27	ELITE RANK 28	-
PLATE WINNER	ELITE RANK 31	ELITE RANK 30	ELITE RANK 29	-

# RANJI TROPHY



Elite A	Elite B	Elite C	Elite D	Plate
J & K	Karnataka	Bengal	Uttarakhand	Nagaland
Madhya Pradesh	Andhra	Jharkhand	Mumbai	Manipur
Vidarbha	Saurashtra	Maharashtra	Haryana	Meghalaya
Baroda	Chhattisgarh	Services	Railways	Sikkim
Uttar Pradesh	Hyderabad	Gujarat	Rajasthan	Mizoram
Pondicherry	Tripura	Kerala	Tamil Nadu	Arunachal Pradesh
Goa	Punjab	Delhi	Himachal Pradesh	-
Bihar	Assam	Odisha	Chandigarh	-



# ► Syed Mushtaq Ali Trophy – Grouping Logic

Points Table from 2025-26 season are considered.

All Elite teams are ranked based on Winner, Runner, Super League rank 3 – 8 based on SL Points, Wins & NRR.

Remaining teams are grouped and ranked based on league stage Points, Wins, NRR.

Bottom team from all Groups (A/B/C/D) combined based on league stage Points/Wins/NRR relegated to Plate Group

Winner from Plate Group promoted to Elite Group A.

Teams are grouped based on the below logic:

Elite A	Elite B	Elite C	Elite D	Plate Group
ELITE WINNER	ELITE RUNNER	SL RANK 3	SL RANK 4	ELITE RANK 32
SL RANK 8	SL RANK 7	SL RANK 6	SL RANK 5	PLATE RUNNER
ELITE RANK 9	ELITE RANK 10	ELITE RANK 11	ELITE RANK 12	PLATE RANK 3
ELITE RANK 16	ELITE RANK 15	ELITE RANK 14	ELITE RANK 13	PLATE RANK 4
ELITE RANK 17	ELITE RANK 18	ELITE RANK 19	ELITE RANK 20	PLATE RANK 5
ELITE RANK 24	ELITE RANK 23	ELITE RANK 22	ELITE RANK 21	PLATE RANK 6
ELITE RANK 25	ELITE RANK 26	ELITE RANK 27	ELITE RANK 28	-
PLATE WINNER	ELITE RANK 31	ELITE RANK 30	ELITE RANK 29	-



# SYED MUSHTAQ ALI TROPHY



Elite A	Elite B	Elite C	Elite D	Plate
Jharkhand	Haryana	Andhra	Hyderabad	Services
Rajasthan	Punjab	Madhya Pradesh	Mumbai	Sikkim
Baroda	Delhi	Maharashtra	Goa	Nagaland
Bengal	J & K	Pondicherry	Gujarat	Manipur
Uttar Pradesh	Railways	Kerala	Vidarbha	Meghalaya
Chandigarh	Tamil Nadu	Assam	Odisha	Arunachal Pradesh
Karnataka	Saurashtra	Tripura	Uttarakhand	-
Mizoram	Bihar	Himachal Pradesh	Chhattisgarh	-

# ► Vijay Hazare Trophy – Grouping Logic



Points Table from 2025-26 season are considered.

All Elite teams are ranked based on Winner, Runner, Semi Final Losers Rank 1,2 Quarter Final Losers Rank 1, 2, 3, 4 based on Points, Wins & NRR.

Remaining teams are grouped and ranked based on Points, Wins & NRR.

Bottom team from all Groups (A/B/C/D) combined based on Points/Wins/NRR relegated to Plate Group

Winner from Plate Group promoted to Elite Group A

Teams are grouped based on the below logic:

Elite A	Elite B	Elite C	Elite D	Plate Group
ELITE WINNER	ELITE RUNNER	SF LOSER RANK 1	SF LOSER RANK 2	ELITE RANK 32
QF LOSER RANK 4	QF LOSER RANK 3	QF LOSER RANK 2	QF LOSER RANK 1	PLATE RUNNER
ELITE RANK 9	ELITE RANK 10	ELITE RANK 11	ELITE RANK 12	PLATE RANK 3
ELITE RANK 16	ELITE RANK 15	ELITE RANK 14	ELITE RANK 13	PLATE RANK 4
ELITE RANK 17	ELITE RANK 18	ELITE RANK 19	ELITE RANK 20	PLATE RANK 5
ELITE RANK 24	ELITE RANK 23	ELITE RANK 22	ELITE RANK 21	PLATE RANK 6
ELITE RANK 25	ELITE RANK 26	ELITE RANK 27	ELITE RANK 28	-
PLATE WINNER	ELITE RANK 31	ELITE RANK 30	ELITE RANK 29	-

# VIJAY HAZARE TROPHY



Elite A	Elite B	Elite C	Elite D	Plate
Vidarbha	Saurashtra	Punjab	Karnataka	Sikkim
Madhya Pradesh	Mumbai	Delhi	Uttar Pradesh	Manipur
Baroda	Haryana	Maharashtra	Kerala	Nagaland
Railways	Jharkhand	Chhattisgarh	Bengal	Meghalaya
Tamil Nadu	Gujarat	Himachal Pradesh	Tripura	Arunachal Pradesh
Uttarakhand	J & K	Goa	Odisha	Mizoram
Andhra	Hyderabad	Rajasthan	Assam	-
Bihar	Services	Chandigarh	Pondicherry	-



# ► Col. C K Nayudu Trophy – Grouping Logic

Points Table from 2025-26 season are considered.

All Elite teams are ranked based on Winner, Runner, SF loser Rank 1 & 2, QF Loser Rank 1, 2, 3, 4 based on Points, Bonus Points, Number of Wins, H2H (If applicable) & Quotient.

Remaining teams are grouped and ranked based on Points, Bonus Points, Wins, H2H (If Applicable) & Quotient.

Bottom team from all Elite Groups (A/B/C/D) combined based on Points/Bonus Points/Wins/ H2H (If applicable)/Quotient relegated to Plate Group

Winner from Plate Group promoted to Elite Group C.

Teams are grouped based on the below logic.

Elite Group A	Elite Group B	Elite Group C	Elite Group D	Plate Group
ELITE WINNER	ELITE RUNNER	SF LOSER RANK 1	SF LOSER RANK 2	ELITE RANK 31
QF LOSER RANK 4	QF LOSER RANK 3	QF LOSER RANK 2	QF LOSER RANK 1	PLATE RUNNER
ELITE RANK 9	ELITE RANK 10	ELITE RANK 11	ELITE RANK 12	PLATE RANK 3
ELITE RANK 16	ELITE RANK 15	ELITE RANK 14	ELITE RANK 13	PLATE RANK 4
ELITE RANK 17	ELITE RANK 18	ELITE RANK 19	ELITE RANK 20	PLATE RANK 5
ELITE RANK 24	ELITE RANK 23	ELITE RANK 22	ELITE RANK 21	PLATE RANK 6
ELITE RANK 25	ELITE RANK 26	ELITE RANK 27	ELITE RANK 28	-
ELITE RANK 29	ELITE RANK 30	PLATE WINNER	-	-



# COL. C K NAYUDU TROPHY



Elite A	Elite B	Elite C	Elite D	Plate
Tamil Nadu	Maharashtra	Mumbai	Chhattisgarh	Meghalaya
Karnataka	Jharkhand	Rajasthan	Punjab	Nagaland
Vidarbha	Hyderabad	Baroda	Gujarat	Sikkim
Saurashtra	Andhra	Bengal	Madhya Pradesh	Mizoram
Kerala	Uttar Pradesh	Odisha	Chandigarh	Arunachal Pradesh
Haryana	Railways	Himachal Pradesh	Delhi	Manipur
Pondicherry	Uttarakhand	Goa	J & K	-
Tripura	Assam	Bihar	-	-

# ► Men's U-23 State A Trophy – Grouping Logic



Points Table from 2025-26 season are considered.

All Elite teams are ranked based on Winner, Runner, Semi Final Losers rank 1,2 Quarter Final Losers rank 1, 2, 3, 4 based on Points, Wins & NRR.

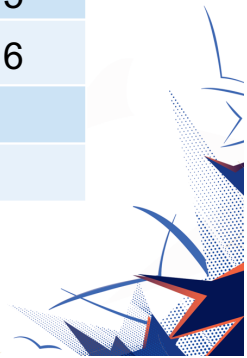
Remaining teams are grouped and ranked based on Points, Wins & NRR.

Bottom team from all Groups (A/B/C/D) combined based on Points/Wins/NRR relegated to Plate Group

Winner from Plate Group promoted to Elite Group C.

Teams are grouped based on the below logic:

Elite Group A	Elite Group B	Elite Group C	Elite Group D	Plate Group
ELITE WINNER	ELITE RUNNER	SF LOSER RANK 1	SF LOSER RANK 2	ELITE RANK 31
QF LOSER RANK 4	QF LOSER RANK 3	QF LOSER RANK 2	QF LOSER RANK 1	PLATE RUNNER
ELITE RANK 9	ELITE RANK 10	ELITE RANK 11	ELITE RANK 12	PLATE RANK 3
ELITE RANK 16	ELITE RANK 15	ELITE RANK 14	ELITE RANK 13	PLATE RANK 4
ELITE RANK 17	ELITE RANK 18	ELITE RANK 19	ELITE RANK 20	PLATE RANK 5
ELITE RANK 24	ELITE RANK 23	ELITE RANK 22	ELITE RANK 21	PLATE RANK 6
ELITE RANK 25	ELITE RANK 26	ELITE RANK 27	ELITE RANK 28	-
ELITE RANK 29	ELITE RANK 30	PLATE WINNER	-	-



# MENS U-23 STATE A TROPHY



Elite A	Elite B	Elite C	Elite D	Plate
Tamil Nadu	Uttar Pradesh	Bengal	Rajasthan	Bihar
Andhra	Madhya Pradesh	Maharashtra	Mumbai	Mizoram
Punjab	Saurashtra	Karnataka	Baroda	Manipur
Odisha	Delhi	J & K	Gujarat	Nagaland
Vidarbha	Jharkhand	Kerala	Chhattisgarh	Sikkim
Railways	Himachal Pradesh	Chandigarh	Pondicherry	Arunachal Pradesh
Uttarakhand	Hyderabad	Haryana	Goa	-
Tripura	Assam	Meghalaya	-	-

# ► Vinoo Mankad Trophy – Grouping Logic



Points Table from 2025-26 season are considered.

All Elite teams are ranked based on Winner, Runner, Semi Final Losers rank 1 & 2, Quarter Final Losers rank 1, 2, 3, 4, Pre-Quarter Final Loser rank 1, 2 based on Points, Wins & NRR.

Remaining teams are grouped and ranked based on Points, Wins & NRR.

Bottom team from all Groups (A/B/C/D & E) combined based on Points/Wins/NRR relegated to Plate Group

Winner from Plate Group promoted to Elite Group A.

Teams are grouped based on the below logic:

Elite Group A	Elite Group B	Elite Group C	Elite Group D	Elite Group E	Plate Group
ELITE WINNER	ELITE RUNNER	SF LOSER RANK 1	SF LOSER RANK 2	QF LOSER RANK 1	ELITE RANK 30
PQF LOSER RANK 2	PQF LOSER RANK 1	QF LOSER RANK 4	QF LOSER RANK 3	QF LOSER RANK 2	PLATE RUNNER
ELITE RANK 11	ELITE RANK 12	ELITE RANK 13	ELITE RANK 14	ELITE RANK 15	PLATE RANK 3
ELITE RANK 20	ELITE RANK 19	ELITE RANK 18	ELITE RANK 17	ELITE RANK 16	PLATE RANK 4
ELITE RANK 21	ELITE RANK 22	ELITE RANK 23	ELITE RANK 24	ELITE RANK 25	PLATE RANK 5
PLATE WINNER	ELITE RANK 29	ELITE RANK 28	ELITE RANK 27	ELITE RANK 26	PLATE RANK 6

# VINOO MANKAD TROPHY



Elite A	Elite B	Elite C	Elite D	Elite E	Plate
Hyderabad	Punjab	Bengal	Saurashtra	Gujarat	Tripura
Rajasthan	Odisha	Tamil Nadu	Mumbai	Karnataka	Sikkim
Madhya Pradesh	Chhattisgarh	Vidarbha	Uttarakhand	Jharkhand	Arunachal Pradesh
Maharashtra	Uttar Pradesh	J & K	Kerala	Chandigarh	Meghalaya
Baroda	Haryana	Goa	Assam	Himachal Pradesh	Mizoram
Manipur	Bihar	Pondicherry	Andhra	Delhi	Nagaland



## ► Cooch Behar Trophy – Grouping Logic

Points Table from 2025-26 season are considered.

All Elite teams are ranked based on Winner, Runner, SF loser rank 1 & 2, QF Loser rank 1, 2, 3, 4, PQF Loser rank 1, 2 based on Points, Bonus Points, Number of Wins, H2H (If applicable) & Quotient.

Remaining teams are grouped and ranked based on Points, Bonus Points, Wins, H2H (If Applicable) & Quotient.

Bottom team from all Elite Groups (A/B/C/D/E) combined based on Points/Bonus Points/Wins/H2H (If applicable)/Quotient relegated to Plate Group

Winner from Plate Group are promoted to Elite Group A.

Teams are grouped based on the below logic

Elite Group A	Elite Group B	Elite Group C	Elite Group D	Elite Group E	Plate Group
ELITE WINNER	ELITE RUNNER	SF LOSER RANK 1	SF LOSER RANK 2	QF LOSER RANK 1	ELITE RANK 30
PQF LOSER RANK 2	PQF LOSER RANK 1	QF LOSER RANK 4	QF LOSER RANK 3	QF LOSER RANK 2	PLATE RUNNER
ELITE RANK 11	ELITE RANK 12	ELITE RANK 13	ELITE RANK 14	ELITE RANK 15	PLATE RANK 3
ELITE RANK 20	ELITE RANK 19	ELITE RANK 18	ELITE RANK 17	ELITE RANK 16	PLATE RANK 4
ELITE RANK 21	ELITE RANK 22	ELITE RANK 23	ELITE RANK 24	ELITE RANK 25	PLATE RANK 5
PLATE WINNER	ELITE RANK 29	ELITE RANK 28	ELITE RANK 27	ELITE RANK 26	PLATE RANK 6



# COOCH BEHAR TROPHY



Elite A	Elite B	Elite C	Elite D	Elite E	Plate
Madhya Pradesh	Gujarat	Punjab	Tamil Nadu	Goa	Assam
Andhra	Uttar Pradesh	Rajasthan	Saurashtra	Karnataka	Nagaland
Maharashtra	Baroda	Chandigarh	Mumbai	Bengal	Meghalaya
Jharkhand	Chhattisgarh	Delhi	Uttarakhand	Haryana	Mizoram
Vidarbha	Pondicherry	Hyderabad	Bihar	J & K	Arunachal Pradesh
Manipur	Kerala	Himachal Pradesh	Tripura	Odisha	Sikkim



# ► Vijay Merchant Trophy – Grouping Logic

Points Table from 2025-26 season are considered.

All Elite teams are ranked based on Winner, Runner, SF loser rank 1 & 2, QF Loser rank 1, 2, 3, 4 , PQF Loser rank 1, 2 based on Points, Bonus Points, Number of Wins, H2H (If applicable) & Quotient.

Remaining teams are grouped and ranked based on Points, Bonus Points, Wins, H2H (If Applicable) & Quotient.

Bottom team from all Elite Groups (A/B/C/D/E) combined based on Points/Bonus Points/Wins/H2H (If applicable)/Quotient relegated to Plate Group

Winner from Plate Group promoted to Elite Group A.

Teams are grouped based on the below logic

Elite Group A	Elite Group B	Elite Group C	Elite Group D	Elite Group E	Plate Group
ELITE WINNER	ELITE RUNNER	SF LOSER RANK 1	SF LOSER RANK 2	QF LOSER RANK 1	ELITE RANK 30
PQF LOSER RANK 2	PQF LOSER RANK 1	QF LOSER RANK 4	QF LOSER RANK 3	QF LOSER RANK 2	PLATE RUNNER
ELITE RANK 11	ELITE RANK 12	ELITE RANK 13	ELITE RANK 14	ELITE RANK 15	PLATE RANK 3
ELITE RANK 20	ELITE RANK 19	ELITE RANK 18	ELITE RANK 17	ELITE RANK 16	PLATE RANK 4
ELITE RANK 21	ELITE RANK 22	ELITE RANK 23	ELITE RANK 24	ELITE RANK 25	PLATE RANK 5
PLATE WINNER	ELITE RANK 29	ELITE RANK 28	ELITE RANK 27	ELITE RANK 26	PLATE RANK 6



# VIJAY MERCHANT TROPHY



Elite A	Elite B	Elite C	Elite D	Elite E	Plate
Mumbai	Maharashtra	Haryana	Assam	Punjab	Manipur
Andhra	Chhattisgarh	Uttar Pradesh	Madhya Pradesh	Vidarbha	Mizoram
Tamil Nadu	Karnataka	Gujarat	Baroda	Bengal	Sikkim
Kerala	Rajasthan	Hyderabad	Jharkhand	Saurashtra	Arunachal Pradesh
Delhi	Uttarakhand	Odisha	Tripura	Pondicherry	Nagaland
J & K	Goa	Chandigarh	Himachal Pradesh	Bihar	Meghalaya

## ► Senior Women's T20 Trophy – Grouping Logic



Points Table from 2025-26 season are considered.

All Elite teams are ranked based on Winner, Runner, Super League rank 3 – 8 based on super league Points, Wins & NRR.

Remaining teams are grouped and ranked based on league stage Points, Wins & NRR.

Bottom team from all Groups (A/B/C/D) combined based on Points/Wins/NRR relegated to Plate Group

Winner from Plate Group promoted to Elite Group C.

Teams are grouped based on the below logic:

Elite A	Elite B	Elite C	Elite D	Plate Group
ELITE WINNER	ELITE RUNNER	SL RANK 3	SL RANK 4	ELITE RANK 31
SL RANK 8	SL RANK 7	SL RANK 6	SL RANK 5	PLATE RUNNER
ELITE RANK 9	ELITE RANK 10	ELITE RANK 11	ELITE RANK 12	PLATE RANK 3
ELITE RANK 16	ELITE RANK 15	ELITE RANK 14	ELITE RANK 13	PLATE RANK 4
ELITE RANK 17	ELITE RANK 18	ELITE RANK 19	ELITE RANK 20	PLATE RANK 5
ELITE RANK 24	ELITE RANK 23	ELITE RANK 22	ELITE RANK 21	PLATE RANK 6
ELITE RANK 25	ELITE RANK 26	ELITE RANK 27	ELITE RANK 28	-
ELITE RANK 29	ELITE RANK 30	PLATE WINNER	-	-

# SENIOR WOMEN'S T20 TROPHY



Elite A	Elite B	Elite C	Elite D	Plate
Maharashtra	Madhya Pradesh	Vidarbha	Delhi	Bihar
Karnataka	Haryana	Railways	Mumbai	Nagaland
Chhattisgarh	Baroda	Kerala	Pondicherry	Mizoram
Bengal	Himachal Pradesh	Tamil Nadu	Uttar Pradesh	Meghalaya
Goa	Andhra	Punjab	Jharkhand	Manipur
Chandigarh	Rajasthan	Gujarat	Uttarakhand	Arunachal Pradesh
J & K	Odisha	Tripura	Hyderabad	-
Assam	Saurashtra	Sikkim	-	-

# ► Senior Women's One Day Trophy – Grouping Logic



Points Table from 2025-26 season are considered.

All Elite teams are ranked based on Winner, Runner, Semi Final Losers rank 1,2 Quarter Final Losers rank 1, 2, 3, 4 based on Points, Wins & NRR.

Remaining teams are grouped and ranked based on Points, Wins & NRR.

Bottom team from all Groups (A/B/C/D) combined based on Points/Wins/NRR relegated to Plate Group.

Winner from Plate Group promoted to Elite Group C.

Teams are grouped based on the below logic:

Elite A	Elite B	Elite C	Elite D	Plate Group
ELITE WINNER	ELITE RUNNER	SF LOSER RANK 1	SF LOSER RANK 2	ELITE RANK 31
QF LOSER RANK 4	QF LOSER RANK 3	QF LOSER RANK 2	QF LOSER RANK 1	PLATE RUNNER
ELITE RANK 9	ELITE RANK 10	ELITE RANK 11	ELITE RANK 12	PLATE RANK 3
ELITE RANK 16	ELITE RANK 15	ELITE RANK 14	ELITE RANK 13	PLATE RANK 4
ELITE RANK 17	ELITE RANK 18	ELITE RANK 19	ELITE RANK 20	PLATE RANK 5
ELITE RANK 24	ELITE RANK 23	ELITE RANK 22	ELITE RANK 21	PLATE RANK 6
ELITE RANK 25	ELITE RANK 26	ELITE RANK 27	ELITE RANK 28	-
ELITE RANK 29	ELITE RANK 30	PLATE WINNER	-	-



# SENIOR WOMEN'S ONE DAY TROPHY



Elite A	Elite B	Elite C	Elite D	Plate
Delhi	Railways	Chhattisgarh	Andhra	Arunachal Pradesh
Mumbai	Karnataka	Rajasthan	Maharashtra	Sikkim
Bengal	Uttar Pradesh	Kerala	Vidarbha	Mizoram
Jharkhand	Himachal Pradesh	Uttarakhand	Odisha	Manipur
J & K	Gujarat	Pondicherry	Punjab	Nagaland
Goa	Tripura	Madhya Pradesh	Haryana	Meghalaya
Hyderabad	Chandigarh	Baroda	Saurashtra	-
Tamil Nadu	Assam	Bihar	-	-



# ► Women's U23 T20 Trophy – Grouping Logic

Points Table from 2025-26 season are considered.

All Elite teams are ranked based on Winner, Runner, Semi Final Losers rank 1 & 2, Quarter Final Losers rank 1, 2, 3, 4, Pre-Quarter Final Loser rank 1, 2 based on Points, Wins & NRR.

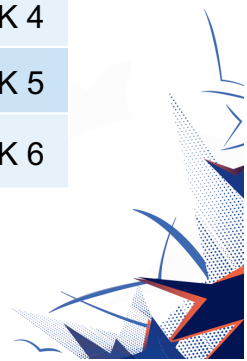
Remaining teams are grouped and ranked based on Points, Wins & NRR.

Bottom team from all Groups (A/B/C/D & E) combined based on Points/Wins/NRR relegated to Plate Group

Winner from Plate Group promoted to Elite Group A.

Teams are grouped based on the below logic:

Elite A	Elite B	Elite C	Elite D	Elite E	Plate Group
ELITE WINNER	ELITE RUNNER	SF LOSER RANK 1	SF LOSER RANK 2	QF LOSER RANK 1	ELITE RANK 30
PQF LOSER RANK 2	PQF LOSER RANK 1	QF LOSER RANK 4	QF LOSER RANK 3	QF LOSER RANK 2	PLATE RUNNER
ELITE RANK 11	ELITE RANK 12	ELITE RANK 13	ELITE RANK 14	ELITE RANK 15	PLATE RANK 3
ELITE RANK 20	ELITE RANK 19	ELITE RANK 18	ELITE RANK 17	ELITE RANK 16	PLATE RANK 4
ELITE RANK 21	ELITE RANK 22	ELITE RANK 23	ELITE RANK 24	ELITE RANK 25	PLATE RANK 5
PLATE WINNER	ELITE RANK 29	ELITE RANK 28	ELITE RANK 27	ELITE RANK 26	PLATE RANK 6



# WOMEN'S U-23 T20 TROPHY



Elite A	Elite B	Elite C	Elite D	Elite E	Plate
Haryana	Delhi	Mumbai	Karnataka	Tamil Nadu	Sikkim
Vidarbha	Punjab	Andhra	Maharashtra	Bengal	Nagaland
Uttarakhand	Madhya Pradesh	Odisha	Hyderabad	Uttar Pradesh	Arunachal Pradesh
Chhattisgarh	Goa	Assam	Kerala	Gujarat	Manipur
Chandigarh	Baroda	Himachal Pradesh	Jharkhand	Saurashtra	Mizoram
Pondicherry	J & K	Tripura	Bihar	Rajasthan	Meghalaya

# ► Women's U-23 One Day Trophy – Grouping Logic



Points Table from 2025-26 season are considered.

All Elite teams are ranked based on Winner, Runner, Semi Final Losers rank 1 & 2, Quarter Final Losers rank 1, 2, 3, 4, Pre-Quarter Final Loser rank 1, 2 based on Points, Wins & NRR.

Remaining teams are grouped and ranked based on Points, Wins & NRR.

Bottom team from all Groups (A/B/C/D & E) combined based on Points/Wins/NRR are relegated to Plate Group.

Winner from Plate Group promoted to Elite Group A.

Teams are grouped based on the below logic:

Elite A	Elite B	Elite C	Elite D	Elite E	Plate Group
ELITE WINNER	ELITE RUNNER	SF LOSER RANK 1	SF LOSER RANK 2	QF LOSER RANK 1	ELITE RANK 30
PQF LOSER RANK 2	PQF LOSER RANK 1	QF LOSER RANK 4	QF LOSER RANK 3	QF LOSER RANK 2	PLATE RUNNER
ELITE RANK 11	ELITE RANK 12	ELITE RANK 13	ELITE RANK 14	ELITE RANK 15	PLATE RANK 3
ELITE RANK 20	ELITE RANK 19	ELITE RANK 18	ELITE RANK 17	ELITE RANK 16	PLATE RANK 4
ELITE RANK 21	ELITE RANK 22	ELITE RANK 23	ELITE RANK 24	ELITE RANK 25	PLATE RANK 5
PLATE WINNER	ELITE RANK 29	ELITE RANK 28	ELITE RANK 27	ELITE RANK 26	PLATE RANK 6



# WOMENS U-23 ONE DAY TROPHY



Elite A	Elite B	Elite C	Elite D	Elite E	Plate
Maharashtra	Karnataka	Mumbai	Tamil Nadu	Delhi	Tripura
Andhra	Madhya Pradesh	Bengal	Uttarakhand	Punjab	Sikkim
Baroda	Haryana	Uttar Pradesh	Himachal Pradesh	Chandigarh	Nagaland
Hyderabad	Vidarbha	Rajasthan	Odisha	Chhattisgarh	Manipur
Gujarat	Jharkhand	Goa	Saurashtra	Kerala	Meghalaya
Mizoram	Pondicherry	J & K	Bihar	Assam	Arunachal Pradesh



# ► Women U19 T20 Trophy – Grouping Logic

Points Table from 2025-26 season are considered.

All Elite teams are ranked based on Winner, Runner, Semi Final Losers rank 1 & 2, Quarter Final Losers rank 1, 2, 3, 4, Pre-Quarter Final Loser rank 1, 2 based on Points, Wins & NRR.

Remaining teams are grouped and ranked based on Points, Wins & NRR.

Bottom team from all Groups (A/B/C/D & E) combined based on Points/Wins/NRR relegated to Plate Group

Winner from Plate Group promoted to Elite Group A.

Teams are grouped based on the below logic:

Elite A	Elite B	Elite C	Elite D	Elite E	Plate Group
ELITE WINNER	ELITE RUNNER	SF LOSER RANK 1	SF LOSER RANK 2	QF LOSER RANK 1	ELITE RANK 30
PQF LOSER RANK 2	PQF LOSER RANK 1	QF LOSER RANK 4	QF LOSER RANK 3	QF LOSER RANK 2	PLATE RUNNER
ELITE RANK 11	ELITE RANK 12	ELITE RANK 13	ELITE RANK 14	ELITE RANK 15	PLATE RANK 3
ELITE RANK 20	ELITE RANK 19	ELITE RANK 18	ELITE RANK 17	ELITE RANK 16	PLATE RANK 4
ELITE RANK 21	ELITE RANK 22	ELITE RANK 23	ELITE RANK 24	ELITE RANK 25	PLATE RANK 5
PLATE WINNER	ELITE RANK 29	ELITE RANK 28	ELITE RANK 27	ELITE RANK 26	PLATE RANK 6



# WOMENS U-19 T20 TROPHY



Elite A	Elite B	Elite C	Elite D	Elite E	Plate
Karnataka	Andhra	Bengal	Baroda	Gujarat	Tripura
Rajasthan	Uttar Pradesh	Delhi	Tamil Nadu	Maharashtra	Manipur
Mumbai	Punjab	Haryana	Jharkhand	Vidarbha	Sikkim
Chhattisgarh	Uttarakhand	Saurashtra	Himachal Pradesh	Hyderabad	Arunachal Pradesh
Kerala	Chandigarh	Pondicherry	Odisha	Madhya Pradesh	Meghalaya
Mizoram	Bihar	J & K	Goa	Assam	Nagaland

# ▶ Women U19 One Day Trophy – Grouping Logic



Points Table from 2025-26 season are considered.

All Elite teams are ranked based on Winner, Runner, Semi Final Losers rank 1 & 2, Quarter Final Losers rank 1, 2, 3, 4, Pre-Quarter Final Loser 1, 2 based on Points, Wins & NRR.

Remaining teams are grouped and ranked based on Points, Wins & NRR.

Bottom team from all Groups (A/B/C/D & E) combined based on Points/Wins/NRR are relegated to Plate Group

Winner from Plate Group promoted to Elite Group A.

Teams are grouped based on the below logic:

Elite A	Elite B	Elite C	Elite D	Elite E	Plate Group
ELITE WINNER	ELITE RUNNER	SF LOSER RANK 1	SF LOSER RANK 2	QF LOSER RANK 1	ELITE RANK 30
PQF LOSER RANK 2	PQF LOSER RANK 1	QF LOSER RANK 4	QF LOSER RANK 3	QF LOSER RANK 2	PLATE RUNNER
ELITE RANK 11	ELITE RANK 12	ELITE RANK 13	ELITE RANK 14	ELITE RANK 15	PLATE RANK 3
ELITE RANK 20	ELITE RANK 19	ELITE RANK 18	ELITE RANK 17	ELITE RANK 16	PLATE RANK 4
ELITE RANK 21	ELITE RANK 22	ELITE RANK 23	ELITE RANK 24	ELITE RANK 25	PLATE RANK 5
PLATE WINNER	ELITE RANK 29	ELITE RANK 28	ELITE RANK 27	ELITE RANK 26	PLATE RANK 6



# WOMEN'S U-19 ONE DAY TROPHY



Elite A	Elite B	Elite C	Elite D	Elite E	Plate
Maharashtra	Gujarat	Jharkhand	Karnataka	Bengal	Nagaland
Hyderabad	Madhya Pradesh	Delhi	Uttarakhand	Andhra	Mizoram
Haryana	Uttar Pradesh	Baroda	Mumbai	Punjab	Manipur
Vidarbha	Himachal Pradesh	Tamil Nadu	Chhattisgarh	Kerala	Sikkim
Rajasthan	Odisha	Saurashtra	Chandigarh	Assam	Arunachal Pradesh
Tripura	Bihar	Goa	J & K	Pondicherry	Meghalaya

# Women U15 One Day Trophy – Grouping Logic



Points Table from 2025-26 season are considered.

All Elite teams are ranked based on Winner, Runner, Semi Final Losers rank 1 & 2, Quarter Final Losers rank 1, 2, 3, 4, Pre-Quarter Final Loser rank 1, 2 based on Points, Wins & NRR.

Remaining teams are grouped and ranked based on Points, Wins & NRR.

Bottom team from all Groups (A/B/C/D & E) combined based on Points/Wins/NRR relegated to Plate Group

Winner from Plate Group promoted to Elite Group A.

Teams are grouped based on the below logic:

Elite A	Elite B	Elite C	Elite D	Elite E	Plate Group
ELITE WINNER	ELITE RUNNER	SF LOSER RANK 1	SF LOSER RANK 2	QF LOSER RANK 1	ELITE RANK 30
PQF LOSER RANK 2	PQF LOSER RANK 1	QF LOSER RANK 4	QF LOSER RANK 3	QF LOSER RANK 2	PLATE RUNNER
ELITE RANK 11	ELITE RANK 12	ELITE RANK 13	ELITE RANK 14	ELITE RANK 15	PLATE RANK 3
ELITE RANK 20	ELITE RANK 19	ELITE RANK 18	ELITE RANK 17	ELITE RANK 16	PLATE RANK 4
ELITE RANK 21	ELITE RANK 22	ELITE RANK 23	ELITE RANK 24	ELITE RANK 25	PLATE RANK 5
PLATE WINNER	ELITE RANK 29	ELITE RANK 28	ELITE RANK 27	ELITE RANK 26	-

# WOMENS U-15 ONE DAY TROPHY



Elite A	Elite B	Elite C	Elite D	Elite E	Plate
Mumbai	Maharashtra	Bengal	Punjab	Andhra	Saurashtra
Uttarakhand	Hyderabad	Rajasthan	Haryana	Karnataka	Mizoram
Vidarbha	Baroda	Chhattisgarh	Tamil Nadu	Kerala	Sikkim
Madhya Pradesh	Gujarat	Himachal Pradesh	Delhi	J & K	Nagaland
Uttar Pradesh	Odisha	Assam	Jharkhand	Chandigarh	Meghalaya
Tripura	Bihar	Manipur	Goa	Pondicherry	Arunachal Pradesh



**THANK YOU**